



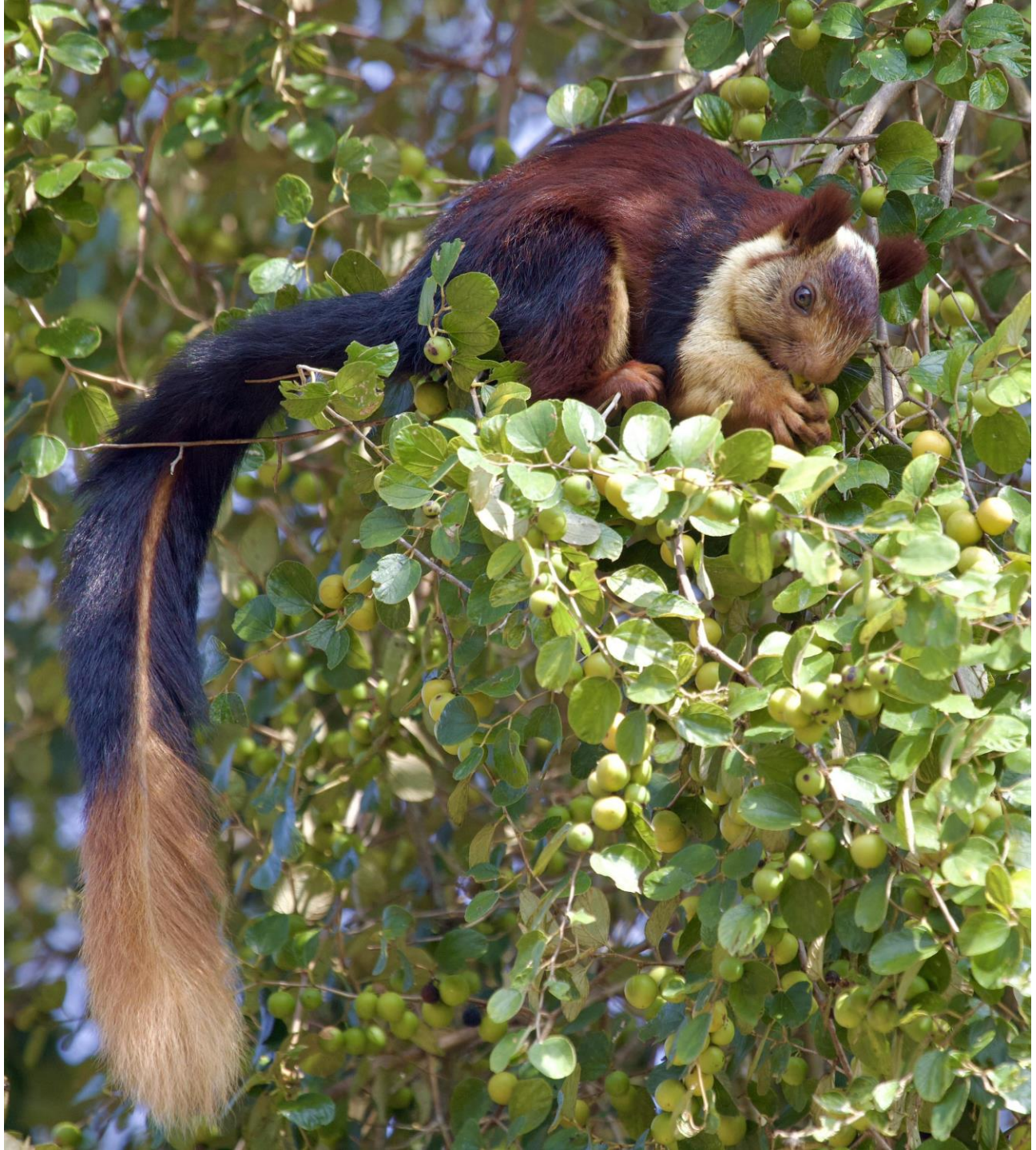
Fruitful Insights

HERITAGE, ECOLOGY, AND PROMISE OF
INDIA'S FRUIT TREES



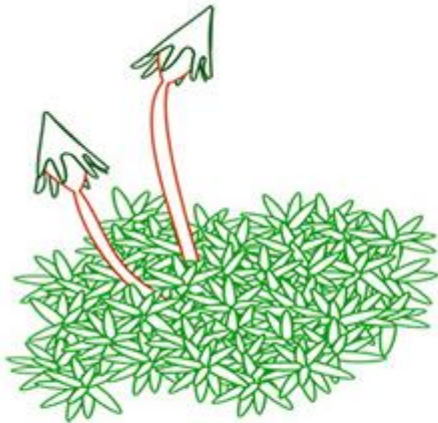
Prasanna N.S.
Eapsa Berry
Ravikanth G.
Ganesan R.
Uma Shaanker R.
Kamaljit S. Bawa





The Evolutionary Genius of Fruit

- How to get seeds far away from parent tree, so they survive?



Mosses
(Bryophytes)



Ferns
(Pteridophytes)

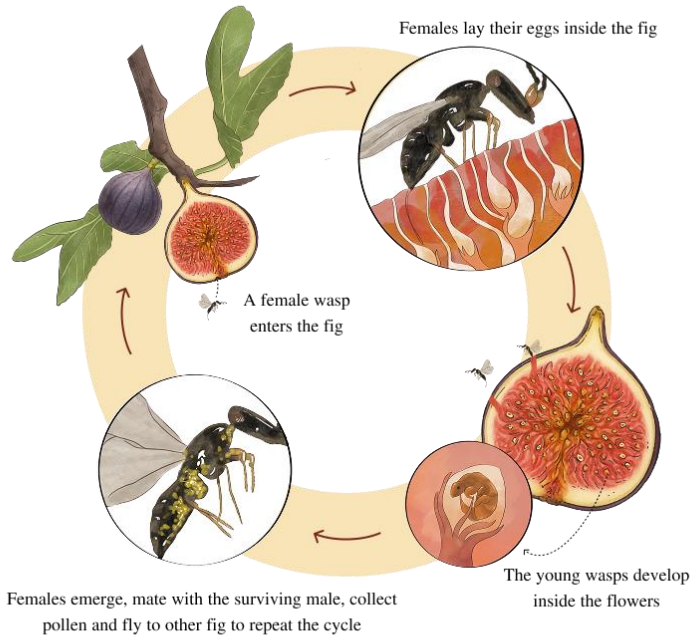


Gymnosperms
(‘Naked Seed’)



Angiosperms
(‘Enclosed Seed’)







Syzygium cumini



Carissa carandas



Rubus ellipticus



Phyllanthus emblica



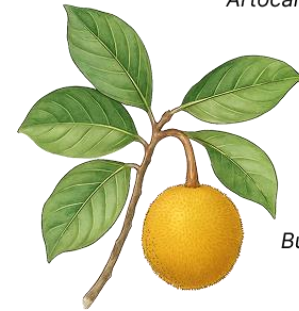
Hippophae rhamnoides



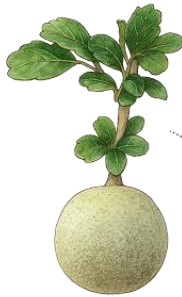
Ficus racemosa



Artocarpus hirsutus



Limonia acidissima



Aegle marmelos



Buchanania lanzan



Garcinia indica



Ziziphus mauritiana



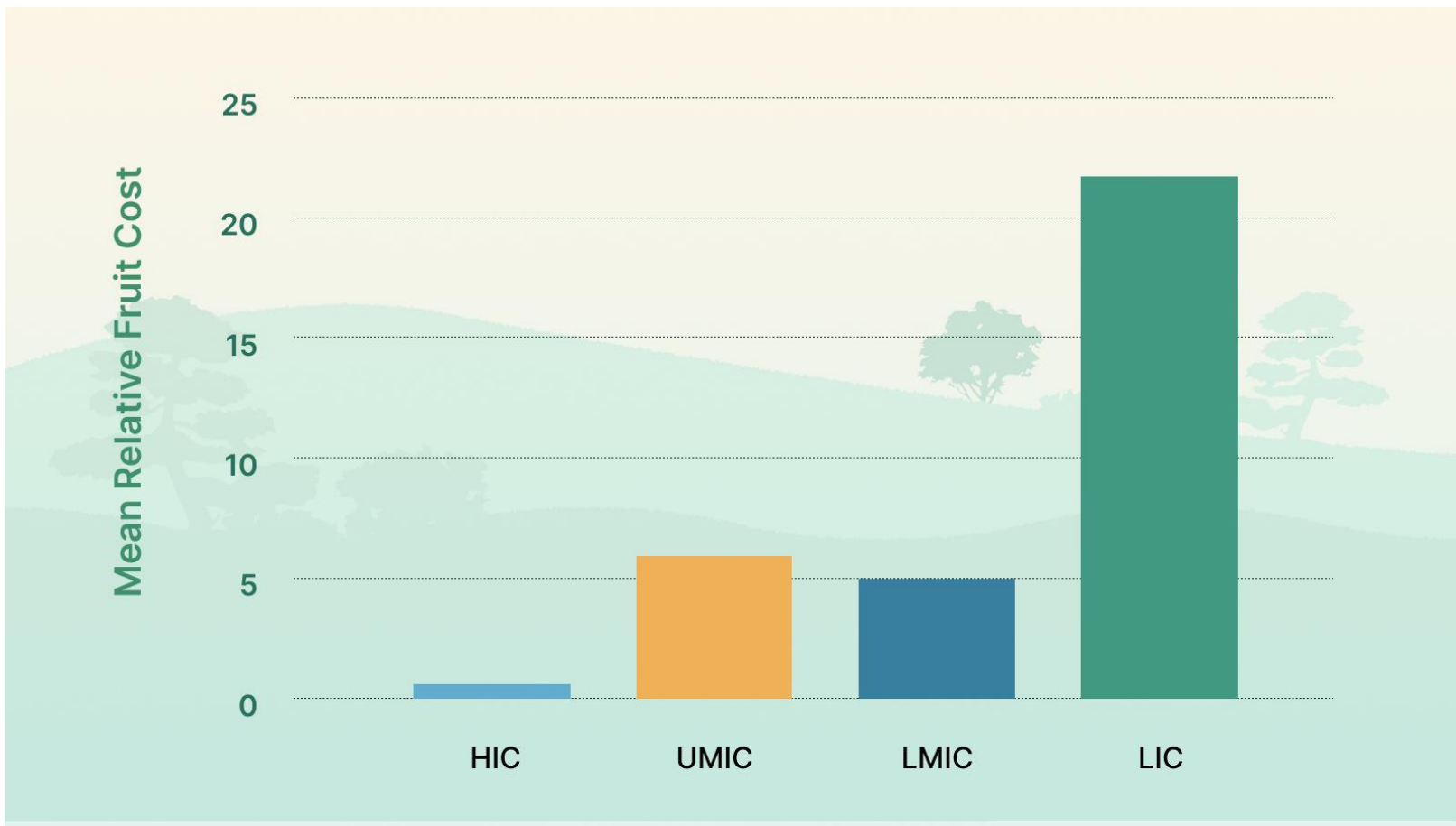
Myrica esculenta



Flacourtia indica



The Fruit Paradox of India





Fruitful Insights

HERITAGE, ECOLOGY, AND PROMISE OF
INDIA'S FRUIT TREES



Prasanna N.S.
Eapsa Berry
Ravikanth G.
Ganesan R.
Uma Shaanker R.
Kamaljit S. Bawa

